

Engaging Communities

2017 Mid-Atlantic Stream Restoration Conference

Craig Carson and Josh Burch



How Do You Want Your Project to Go?

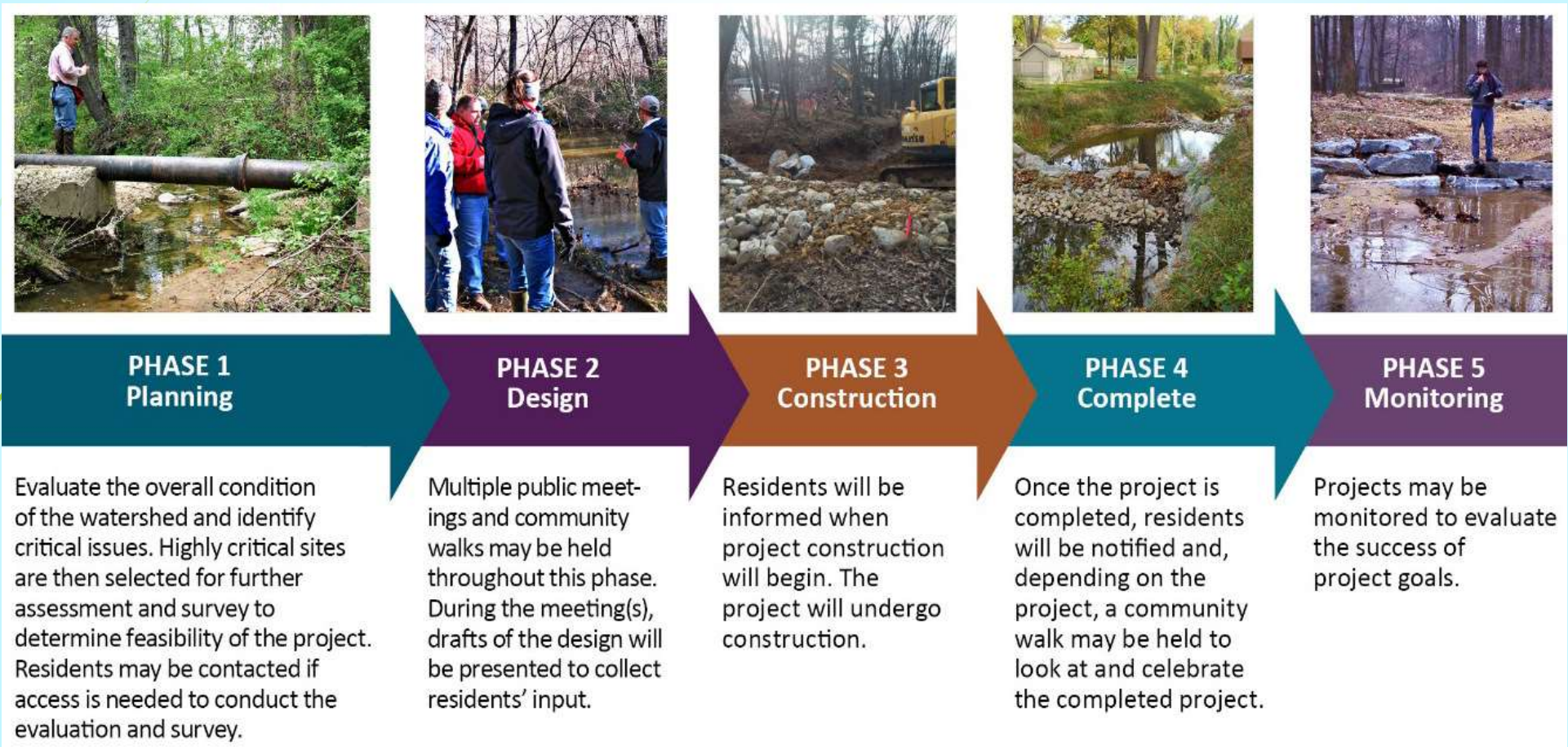
Locked in chains?



Or cutting ribbons?



Engagement Starts with Planning



Importance of Engagement



Responsibility – Permission – Support – Stewardship - Sustainability

Actions to Engage the Community

- ▶ Trash Clean-Ups
- ▶ Multiple Community Meetings
- ▶ Stream Walks
- ▶ Door knocking with home/yard visits
- ▶ Be visible and community presence
- ▶ Find an ally/champion
- ▶ Be honest (can't solve all problems)
- ▶ Understand other community issues or concerns
- ▶ Block parties
- ▶ Testimonials



Translating Your Message

Wheaton Woods Green Streets

Green Streets (calles verdes) son practicas de jardineria localizadas en el derecho de paso del condado mantenidas por el Condado que ayudan la calidad del agua.

Caminata en la Comunidad, Sábado 15 de Julio
1ª caminata: 9:00 am – 11:30 pm, 2ª caminata: 2: 1:00 pm – 3:30 pm
Lluvia o sol (vea el mapa)

¡Queremos sus opiniones!
Acompañe al personal del Condado para una conversación de diseños preliminar.
Una persona que habla español va a estar disponible.



Jardines de lluvia

Los diseños pueden incluir jardines de lluvia, cajas de árboles o instalaciones subterráneas en el derecho de paso del condado.

Para más información, contacte a Christy Garametaro at 240-777-7720
email: CLC@montgomerycountymd.gov
www.montgomerycountymd.gov/transportation & haga clic en "Wheaton Woods"
Vea el video de Green Streets: <http://tinyurl.com/mcgreengstreet>



184 + languages spoken

Spanish, Chinese (Mandarin), Korean, Vietnamese,
Amharic (Ethiopia), ...



Your Problem Ain't Their Problem

Your Problems

- ▶ Nitrogen, phosphorus, & sediment, Oh My!
- ▶ Proper plan, pattern, and profile
- ▶ Biological integrity & ecological uplift
- ▶ Asset protection
- ▶ Permitting
- ▶ Floodplain
- ▶ Tree loss

Community Problems

- ▶ Losing my backyard!
- ▶ Trees falling!
- ▶ Slope stability for homes and roads
- ▶ Exposed utilities
- ▶ No habitat for birds and animals
- ▶ Fixing up the stream
- ▶ Trails through the park
- ▶ Snakes!
- ▶ Rats!
- ▶ Mosquitoes!

Make Connections to Their Problems



Stable Banks

- Limit tree loss
- Reduce property impacts

Flowing Stream

- No stagnant water
- Pools for fish habitat

Habitat Creation

- Natural predators for mosquitoes
- Aesthetic beauty


You Are Not the Only One

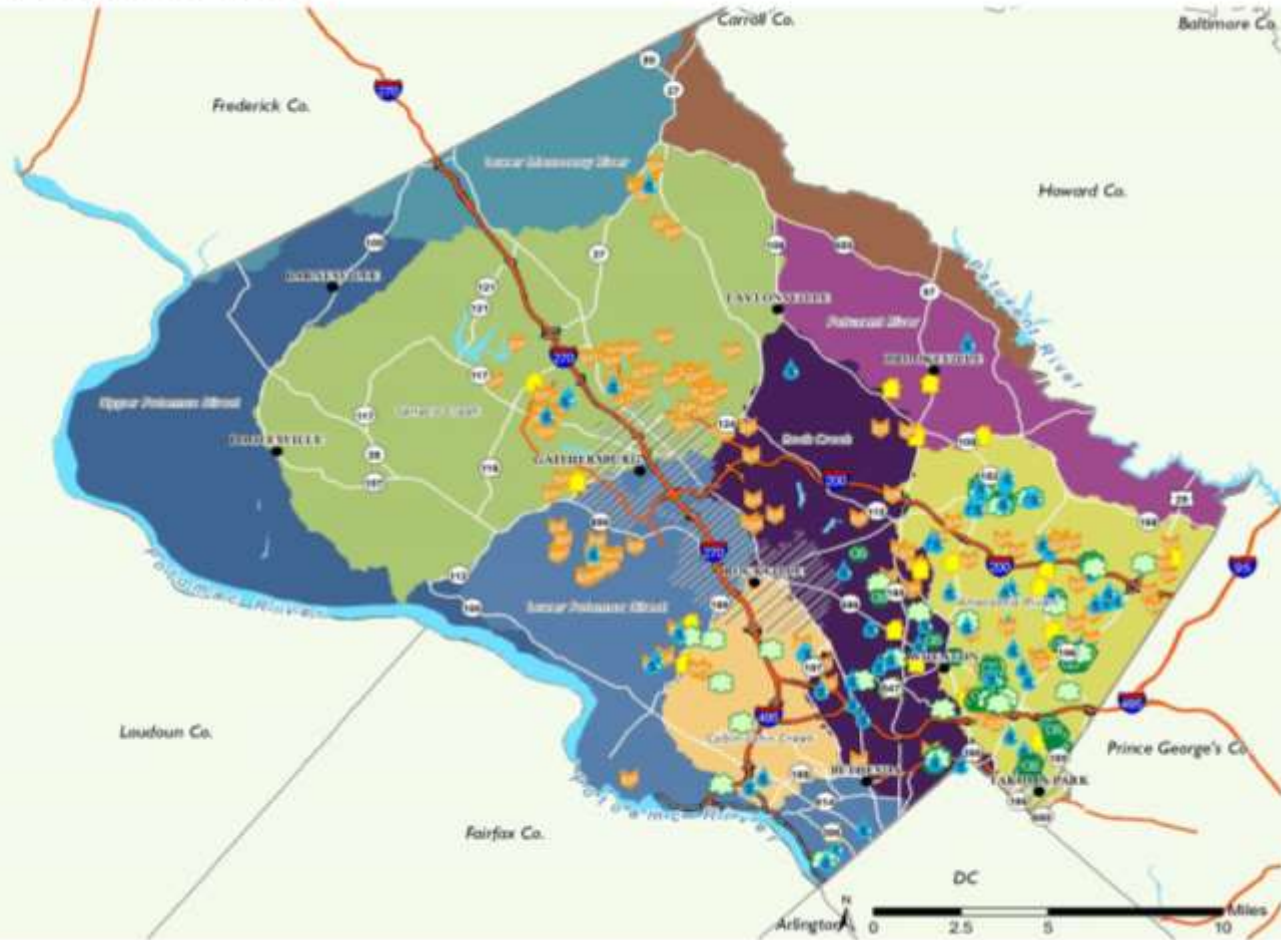
Clean Water Green Communities

Restoration projects in
Montgomery County, Maryland



Restoration Projects

-  Stream Restoration
-  Government Facilities and Schools
-  Green Streets
-  Reforestation and Other
-  Stormwater Pond



Connecting the Dots

Clean Water, Green Communities

Stream Restoration

Breewood Tributary, Silver Spring

Before restoration

Deep unstable banks with tree loss

After restoration

Restored 1,200 ft of stream property

Wide stable banks

Planted trees

Improved forest and aquatic habitat

Less sediment in stream

Plant Habitat Community Water

Green Streets

Plant Habitat Community Water

Added about 50 plants in each garden

Coordinated community identity

Local plants add butterfly habitat

Protects streams by absorbing stormwater runoff

Bioretention garden at Dennis Ave, Silver Spring

Stormwater Ponds

Stoney Creek Pond at NIH, Bethesda

Protects Rock Creek from 204 acres of Bethesda's stormwater runoff

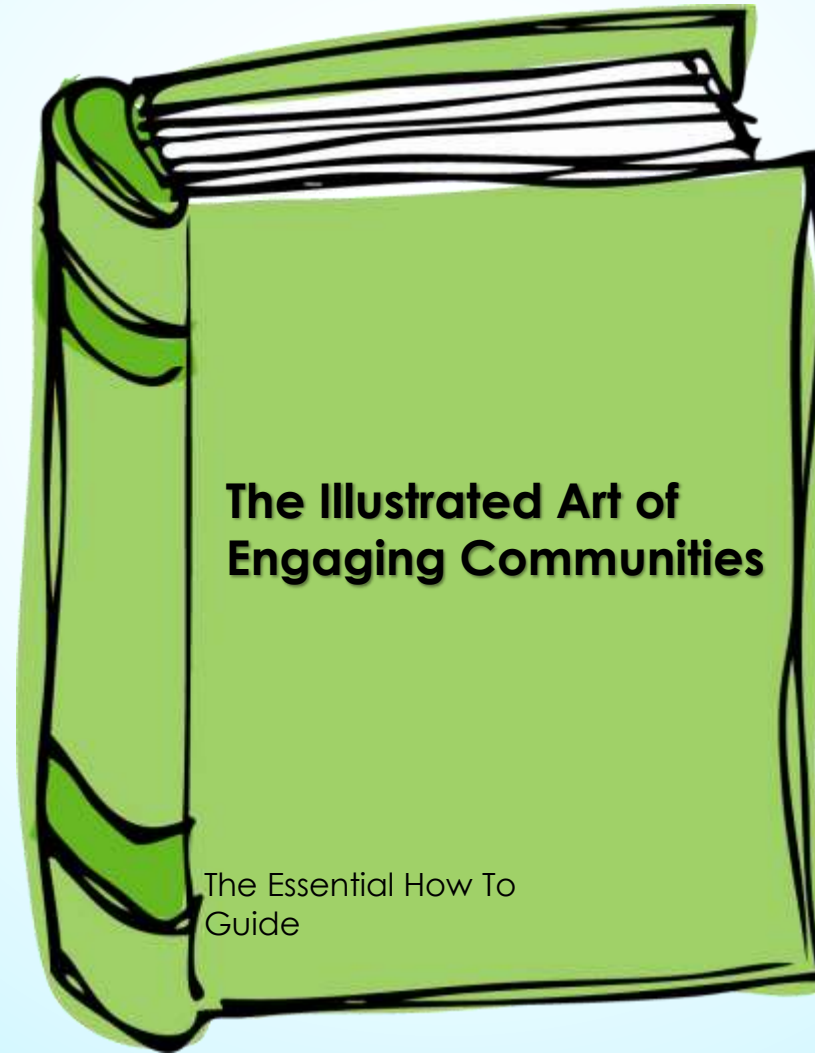
Meadow Plants adds bird habitat


Planted trees, shrubs, meadow, and wetland

Plant Habitat Community Water



Document Your Engagement Process





What steps can be done to have stream restoration projects be more embraced by local communities?

